

To view this email as a web page, go [here](#).



Summer 2011 Newsletter

Heading On to the Road

[Brain: The Inside Story](#)

After a phenomenal opening at the American Museum of Natural History (averaging 1,460 visitors per day!), *Brain: The Inside Story* will be closing in New York on August 14. But that's just the beginning—the show next heads to China to begin its international tour. Slots are booked through 2014 and later slots are filling up fast. *Brain: The Inside Story* fits galleries ranging from 6,500 sq ft and up.



Test your language skills at one of the many interactives in *Brain: The Inside Story*

Coming Soon

[Beyond Earth: The Future of Space Exploration](#)

Take a sneak peek at the newest coming exhibition from AMNH. *Beyond Earth: The Future of Space Exploration* will blast visitors through the solar system and beyond as we explore some of exciting technologies that may help humanity venture into space. Science fiction meets science fact as we examine everything from space elevators to the next generation of spacesuits.

Beyond Earth: The Future of Space Exploration will open in New York on November 19, 2011-watch for more details. Afterwards, there is a unique opportunity for a North American venue to host the show in the fall of 2012 before it leaves the country for an international tour.



Walk on the surface of Mars in *Beyond Earth*

Big Dinos, Small Spaces

The popular exhibition [*Dinosaurs: Ancient Fossils, New Discoveries*](#) is about 7,000 sq ft, a good size for an exhibition about some of the largest animals to walk the earth. When a consortium of small museums in Arkansas led by the Arkansas Museum of Discovery received a grant from the Donald W. Reynolds Foundation of Las Vegas for their Children's Discovery Initiative, they wanted to bring the show into museums with smaller gallery spaces. So they approached us about making a condensed version of the show to tour around the state.

Our Exhibition Team has developed a new version of the exhibition and work has already started on producing a 1,500 sq ft version that will tour seven venues in Arkansas between January 2012 and January 2014. The exhibition is available for hosting from early 2014 on for galleries ranging from 1500-2000 sq ft in size.



Come face to face with *T. Rex* or explore the biomechanics of dinosaurs

If you have such a project of your own in mind, please do not hesitate to contact us to discuss further.

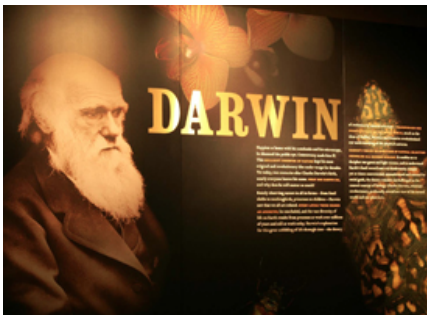
Stories from the Road

The National Geographic Museum in Washington, D.C. is currently hosting *Race to the End of the Earth*, a thrilling tale of Scott and Amundsen's race to be the first explorer to reach the South Pole. The exhibition travels next to Italy, but there are two openings available in summer 2012 through early 2013 before it continues on the rest of its international tour!



Life-sized diorama of Amundsen's winter camp and modern science at the Pole

Near Term Hosting Opportunities



Darwin

Available from Fall 2012



Mythic Creatures: Dragons, Unicorns, & Mermaids

Available Late Summer 2012 through Winter 2013



Lizards and Snakes: Alive!

Available: Late Summer 2012 through Summer 2013

Full Content List

Additional content available from AMNH:

Traveling Exhibitions

- [*Brain: The Inside Story*](#)
- [*Climate Change: The Threat to Life and a New Energy Future*](#)
- [*Darwin*](#)
- [*Dinosaurs: Ancient Fossils, New Discoveries*](#)
- [*Einstein*](#)
- [*The Endurance: Shackleton's Legendary Antarctic Expedition*](#)
- [*Extreme Mammals*](#)
- [*The Horse*](#)
- [*Lizards and Snakes: Alive!*](#)
- [*Mythic Creatures: Dragons, Unicorns & Mermaids*](#)
- [*Race to the End of the Earth*](#)
- [*Traveling the Silk Road: Ancient Pathway to the Modern World*](#)
- [*Water: H₂O = Life*](#)

Planetarium Content

- [*Journey to the Stars*](#)
- [*Cosmic Collisions*](#)
- [*The Search for Life: Are We Alone?*](#)
- [*Passport to the Universe*](#)
- [*SonicVision*](#)
- [*Field Trip to the Moon*](#)
- [*The Digital Universe*](#)

Science Bulletins

IP/Production

For more more information on these or any other AMNH content, please contact:

Alan Draeger
212.769.5725
adraeger@amnh.org

Jan English
212.769.5099
jenglish@amnh.org

This email was sent to: Rduffy@amnh.org

This email was sent by: **American Museum of Natural History**
Central Park West at 79th Street New York, NY, 10024-5192, United States

[Manage your subscriptions](#) or [update your profile](#).

Hours: The Museum is open every day except Thanksgiving and Christmas. 10am-5:45pm

[Unsubscribe](#) | [Privacy Policy](#)